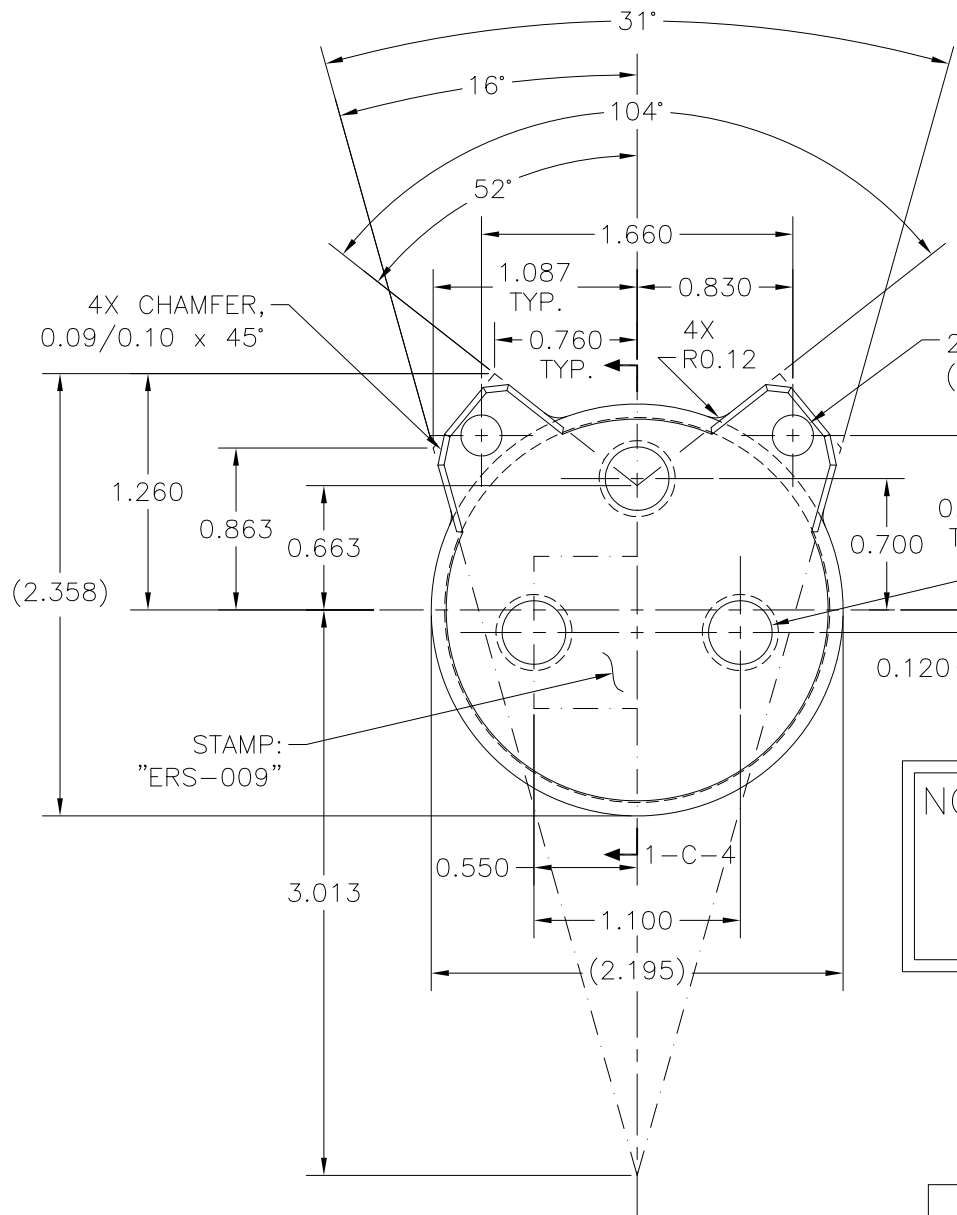


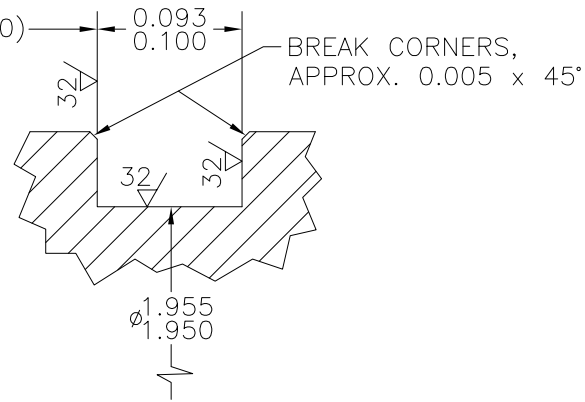
REVISIONS				
NO	DESCRIPTION	DATE	BY	APR/DATE
0	ISSUED FOR MANUFACTURE	05/12/10		
1	ADDED 2X 1/8 NPT HOLES, EXTENDED $\phi 1.582/1.588$ BORE	08/17/10		
2	INCREASED SLOT WIDTH AND CHAMFER	3/2/11		

NOTES:

- MATERIAL: 316/321 S.S., 0.965 x 2.195 x 2.358 LG.
- HEAT TREAT: NONE
- SURFACE TREATMENT: XYLAN COATING OR EQ.
- WEIGHT: 0.69 LBS.

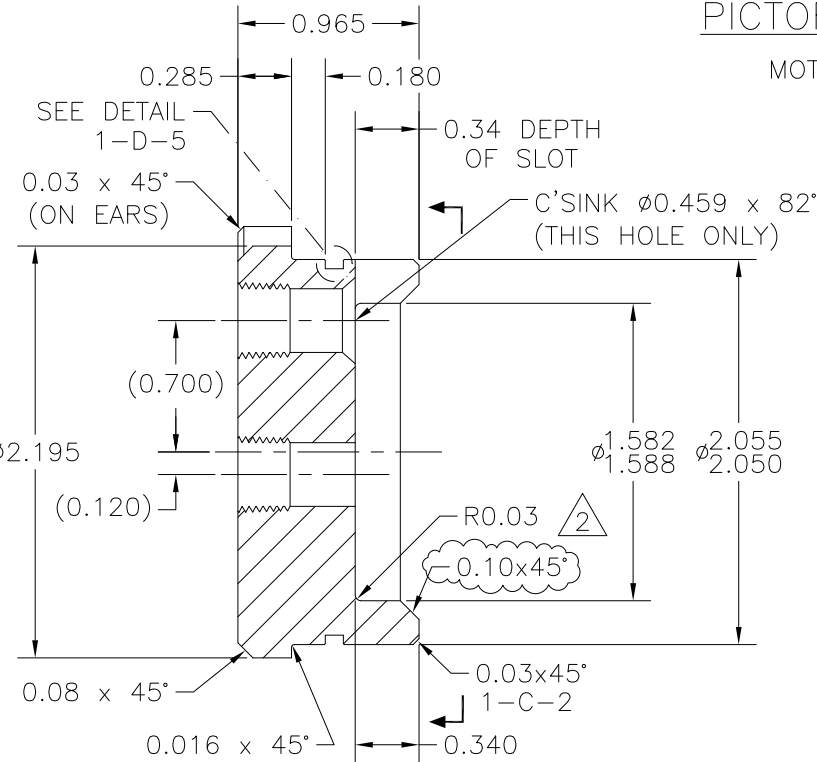


VIEW 1-C-7  
MOTOR CAN CAP



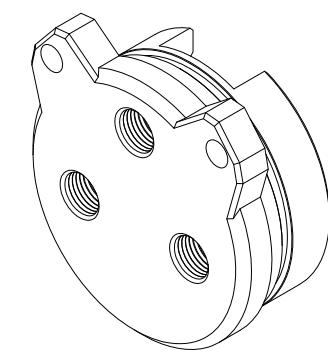
DETAIL 1-D-5

#2-032 O-RING GROOVE  
REF. 1-C-5



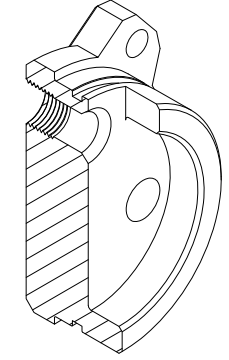
SECTION 1-C-4

REF. 1-B-7



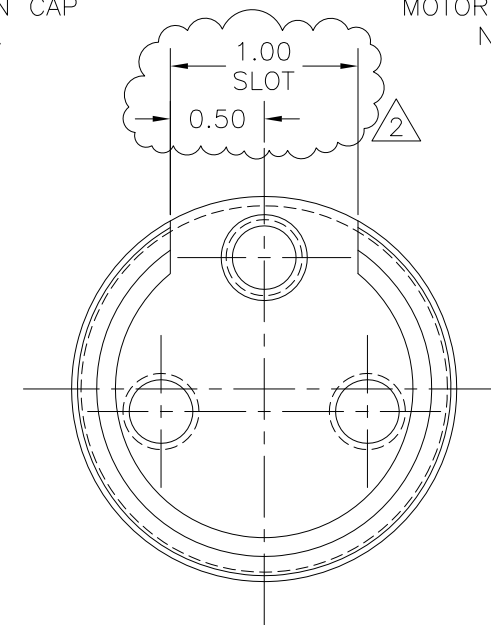
PICTORIAL 1-D-3

MOTOR CAN CAP  
N.T.S.



PICTORIAL 1-D-1

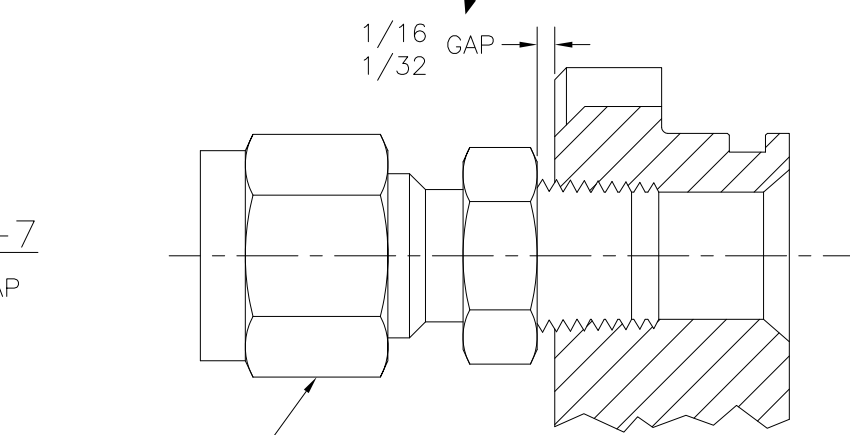
MOTOR CAN CAP  
N.T.S.



VIEW 1-C-2

REF. 1-B-4

NOTE:  
TAP 1/8 NPT TO DEPTH SO THAT FITTING SEALS ON THREADS BEFORE SEATING ON HEX FACE.



DETAIL 1-A-4

REF. 1-C-6

TOLERANCES: UNLESS OTHERWISE SPECIFIED 0.X ± 0.030 0.XX ± 0.010 0.XXX ± 0.005 ANGLES ± 1/2° BREAK EDGES 0.015 x 45° MIN. FINISH 125/ [0.010]A ALL DIMS ARE IN INCHES, UNLESS NOTED OTHERWISE.	PROPRIETARY NOTICE THIS DRAWING AND THE INFORMATION IT CONTAINS ARE CONSIDERED CONFIDENTIAL, AND MAY NOT BE REPRODUCED, COPIED OR USED, IN PART OR IN WHOLE, WITHOUT PRIOR WRITTEN CONSENT.	<b>Integrated Ocean Drilling Program</b> <b>TEXAS A&amp;M UNIVERSITY</b> 1000 DISCOVERY DRIVE COLLEGE STATION, TX 77845	
		SHEET 1 OF 1 SCALE 1:2 BY KM DATE 03/31/10	TITLE MOTOR CAN CAP SYSTEM ERS v.2 APPROVED TP CHECKED JCS ASSEMBLY 3" ERS SIZE D P/N ERS-009 REV. 2